



beddgroup | architects + builders



Spiral stair in wine cellar - Residential - Design/Build



M. Glenn Mitchell AIA, LEED AP
Managing Principal

Beverley Marecheau
SVP, Operations

1744 Taylor Street, NW
Washington, DC 20011
202.882.8139/O
202.882.8188/F

www.beddgroup.com

info@beddgroup.com

find us:



DUNS: 808559418
EIN: 05-0631772
CAGE: 56AX2



beddgroup

+PROFILE

BEDD Group, LLC is an 'Integrated Buildings Solutions' company, providing architectural, construction management and project management services to both the private and public sectors. We are an architect-led design-build firm with a very diverse in-house management team. We boast an exceptional team of multi-disciplined professionals who whole-heartedly embrace the concept of integrated project delivery and prioritize teaming and collaboration. Our designs are guided by cutting edge construction know-how, while or construction efforts are executed with strong design sensibilities and exceptional craftsmanship. Our project-management experts provide structure and controls that are critical to our design and construction teams, in addition to offering stand-alone services to government and commercial clients alike.

We provide superior value, proficient resources and an innovative hands-on approach to every project. A partial list of clients include DCPS, the FDA, the DOL, the NRC and the United States Department of the Army.

MISSION

To design, build, develop and manage environments that promote a thriving and sustainable work-life.

FOCUS

- Aesthetic Excellence
- Exceptional Craftsmanship
- Superior Functionally + Accessibility
- Sustainability + Renewable Energy

MEMBERSHIPS

AIA | USGBC | AGC | MBDA

CERTIFICATIONS + REGISTRATIONS

- SDVOSB Certified
- SBA 8(a) Certified
- District of Columbia CBE
- DDOT Certified
- CCR Registered
- ORCA Registered
- LEED Certified

NIACS CODES

| | | | |
|--------|--------|--------|--------|
| 236118 | 236220 | 237214 | 237310 |
| 238210 | 238220 | 238990 | 337214 |
| 423210 | 484210 | 532420 | 541310 |
| 541330 | 541340 | 541410 | 541430 |
| 541611 | 541618 | 541410 | 541690 |



AIA



VALUES

To us at BEDD Group, *the client* is central to the project team and we encourage the fullest participation in the planning and execution of each project. We hold sacred our professional responsibility to design, build and manage every project within budget, on schedule and with the highest of quality controls and safety practices. Our clients satisfaction, their accolades and references are anticipated and considered a coveted bonus to our compensation ... and we spare no effort to earn this reward.

In response to an increase *environmental awareness*, BEDD Group has, for several years, been adapting “conventional” construction to become more sustainable. As design-build experts, our design and construction works are focused, and are committed to our responsibility to build with sustainability at the heart of our efforts. Our green design approach incorporates natural and alternative materials as well as state-of-the-art technology. We are familiar with many sustainable technologies including green roofs, greywater systems and we also have strong expertise in straw bale construction. We pride ourselves in our ability to apply integrated design principles in order to achieve ecological benefits, all while creating healthy and beautiful environments.

+SERVICES

DESIGN + PLANNING

- Architecture
- Educational Planning
- Engineering Management
- Feasibility Studies
- Furniture, Fixtures + Equipment
- Interior Design
- Sustainability / LEED Design

CONSTRUCTION + PROJECT MANAGEMENT

- CM Agency
- CM at Risk
- Constructability Reviews
- Construction Scheduling + Controls
- Cost Estimating
- Expediting
- Owners Representative
- Quality Control + Quality Assurance
- Resource Planning + Monitoring
- Safety Management
- Scope Definition + Work Breakdown
- Value Engineering + Life Cycle Costing



Front porch restoration (80% demo + rebuild) - Residential - Design/Build

+ COMPLETED PROJECTS

| <u>TYPE</u> | <u>NAME/LOCATION</u> | <u>PROJECT COST</u> | <u>YEAR</u> |
|-------------------------------------|--|---------------------|-------------|
| A/E | Johnson Middle School Window + Door Replacement (Washington, DC) | 65K | 2012 |
| | Frederick Douglas ECLC Design (Washington, DC) | 300K | 2010 |
| | Emery Elementary School ADA Upgrades (Washington, DC) | 650K | 2009 |
| | Chopsticks Restaurant/Sidewalk Café (Washington, DC) | 45K | 2002 |
| | Penang Malaysian Restaurant/Sidewalk Café (Washington, DC) | 430K | 2001 |
| | Series of Mid-Rise Apartments (Manhattan, NY) | 663K - 1.9M | 1998 - 2002 |
| Design/Build | Penn Center ADA Upgrades (Washington, DC) | 47K | 2009 |
| FF+E | FF+E Shelving (Andrews AFB, MD) | 73K | 2011 |
| | Addison Elementary School (Washington, DC) | 142K | 2002 |
| G.C./ Construction Management | FT. Myer Brick Repair (Ft. Myer VA) | 23K | 2011 |
| | Secure Room (Ft. McNair, DC) | 214K | 2011 |
| | Ft. Myer Waterproofing - US Army (Ft. Myer, VA) | 85K | 2010 |
| Sub-Contract | Spingarn High School ADA Upgrades (Washington, DC) | 83K | 2008 |
| Educational Planning | DGS Phase 1 Modernization - DCPS (Washington, DC) | 90K | Ongoing |

+PORTFOLIO OF SELECTED PROJECTS

ALICE DEAL – SOUND BARRIER WALL – WASHINGTON, DC



A/E services for the installation of a sound barrier wall around the existing cooling tower along with a screening structure at the refuse collection area adjacent to the cooling tower. The sound barrier wall is intended to significantly reduce the operating noise level of the cooling tower. This design was approved by the the Commission of Fine Arts.

Approximate cost: \$110K

FOOD AND DRUG ADMINISTRATION – AWNING – IRVINE, CA



Design-Build project for miscellaneous repair and installation of a new awning; smart meters for electric steam and water services; weatherization of coiling, service door and installation of new seismic roof expansion joint.

Approximate cost: \$78K

NUCLEAR REGULATORY COMMISSION – LOBBY – ROCKVILLE, MD



Design/Build project that includes the replacement of suspended acoustic tile ceiling and new LED lighting and controls in lobby/exhibit area of the NRC Whiteflint Building II.

Approximate cost: \$165K

DEPARTMENT OF LABOR – MINE SAFETY AND HEALTH ADMINISTRATION, BEAVER, WV



Design/Build project for repair and renovation of several areas including the renovation of dorm rooms, several stairwells, acoustic tile ceilings, kitchen equipment, laundry room expansion and repair/replacement of exterior wall metal panels

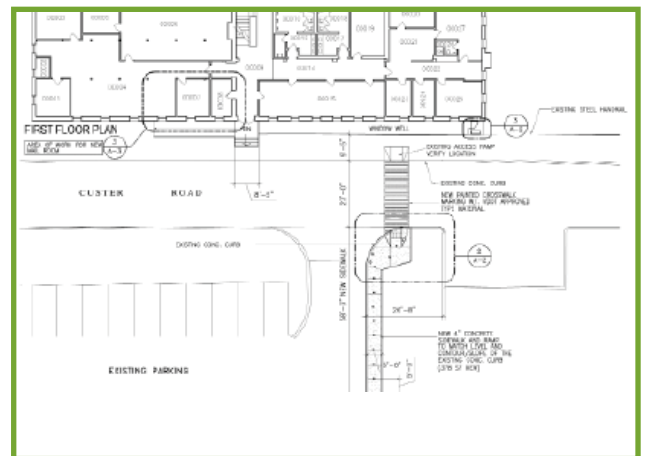
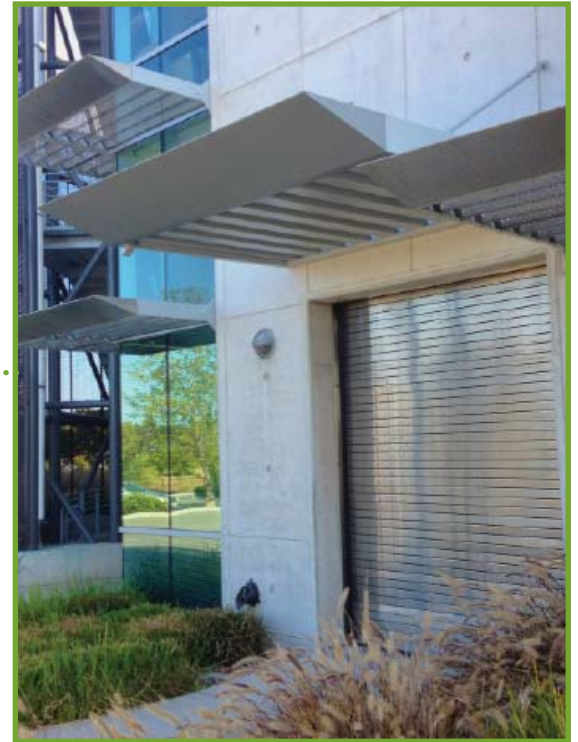
Approximate Cost: \$2.6M

DEPARTMENT OF THE ARMY – MAIL ROOM – FT. MYER, VA



Design/Build project for the relocation of Ft. Myer official mail room and distribution center.

Approximate Cost \$78K





beddgroup



Spiral stair in wine cellar/den - Residential - Design/Build

1744 Taylor St, NW
Washington DC 20011
202.882.8139/O
202.882.8188/F

www.beddgroup.com

Find Us:

